

Southwest Calgary Ring Road

Advisory Notice

August 18th, 2021

Numerous Double Left and Right Lane Closures Macleod Trail SW and Stoney Trail SW

Location: Southbound Macleod Trail SW around Stoney Trail SW

Impacts:

- Numerous double lane closures in sequence

Reason: To allow KGL to perform paving work

Implementation Date: Thursday, August 19th – Sunday, August 22nd

Work hours: 24/7

Speed limit: 50km/h

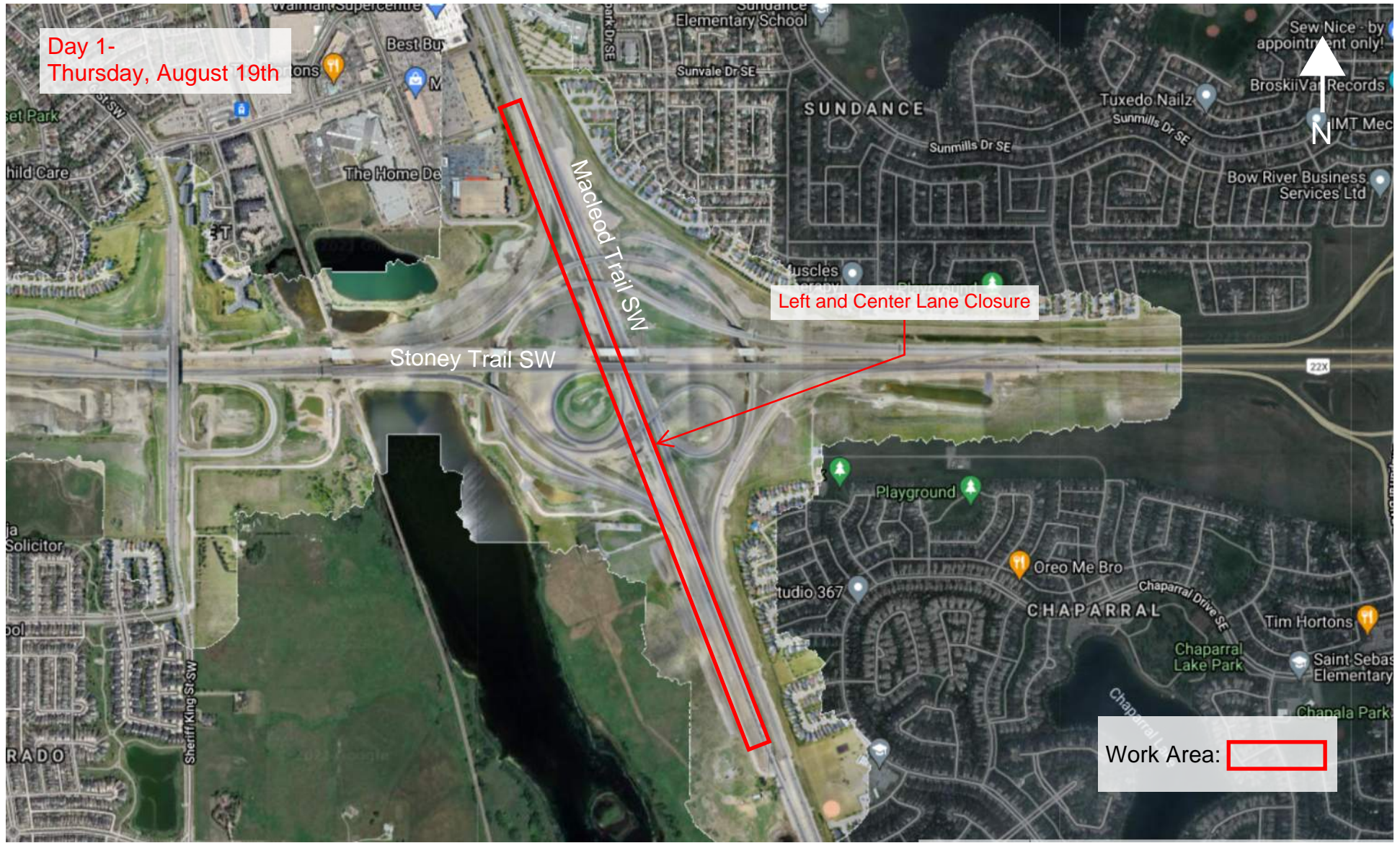
Other information: The traffic accommodation will consist of a series of double left and double right lane closures with on-and off-ramp accommodation to complete this work. Additionally, on the final day of paving the southbound Macleod Trail SW exit ramp to eastbound Stoney Trail SW will be closed between 9:00am and 10:00pm. There will be signs in place directing traffic through the work zone. Please note this work is weather dependent, and dates may change.

For your safety, please obey all construction signs when travelling through the area. KGL Constructors would like to thank you for your patience during this construction period.

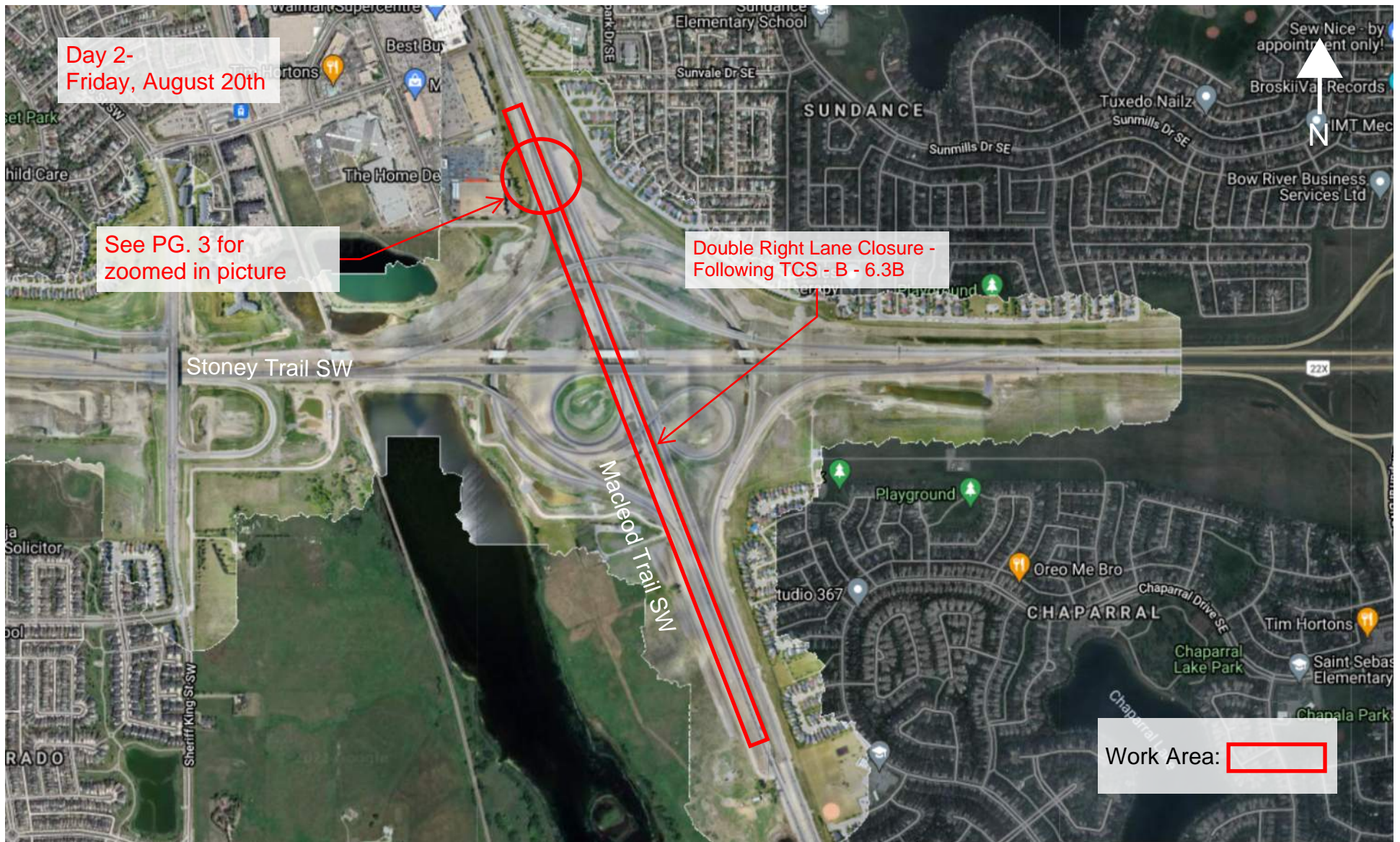
403-212-0565
info@SWCRRproject.com

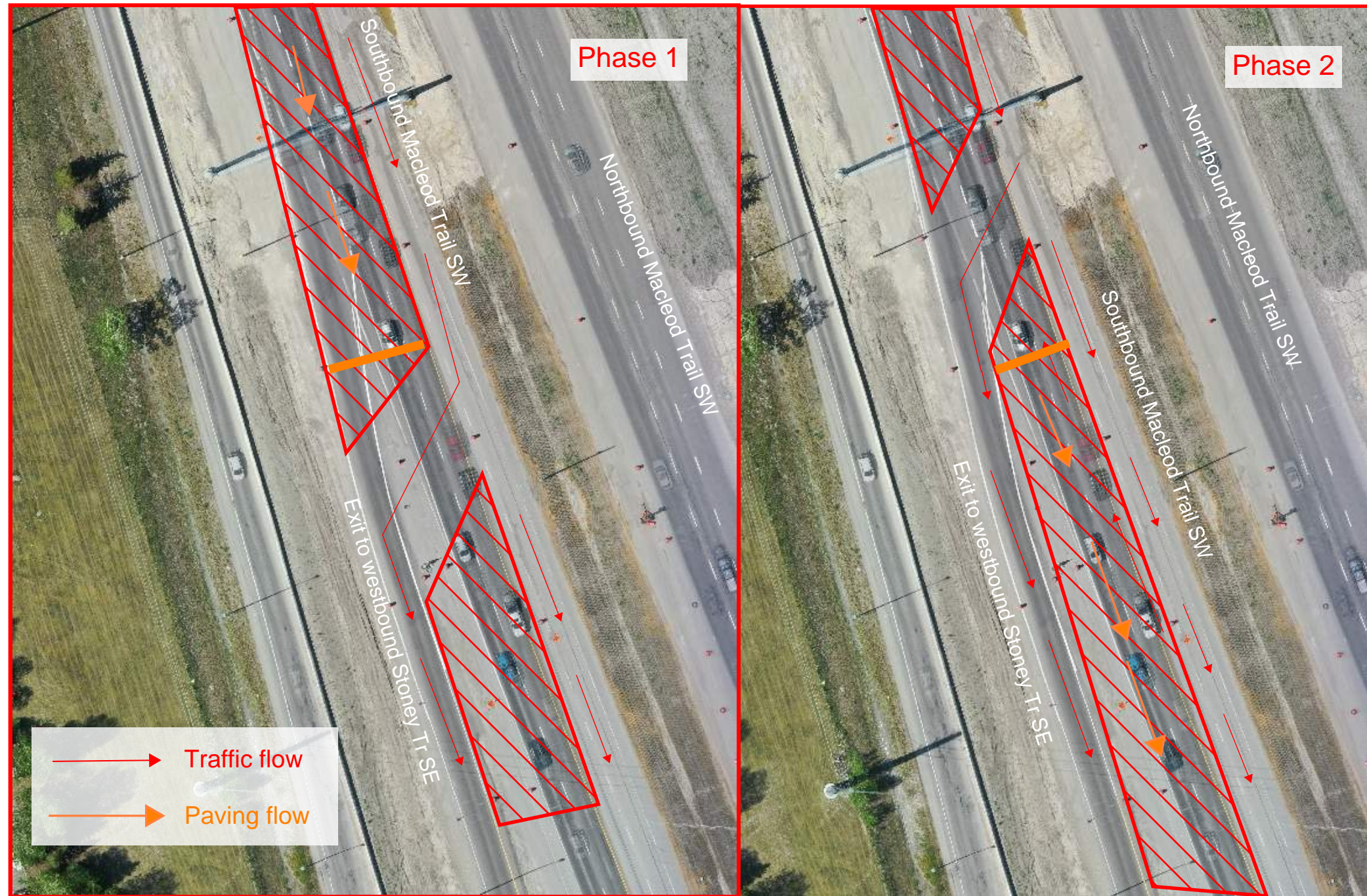


Southbound Macleod Trail SW
Right and Left Lane Closures - Paving Work
Thursday, August 19th - Sunday, August 22nd
6:00am - 7:00pm



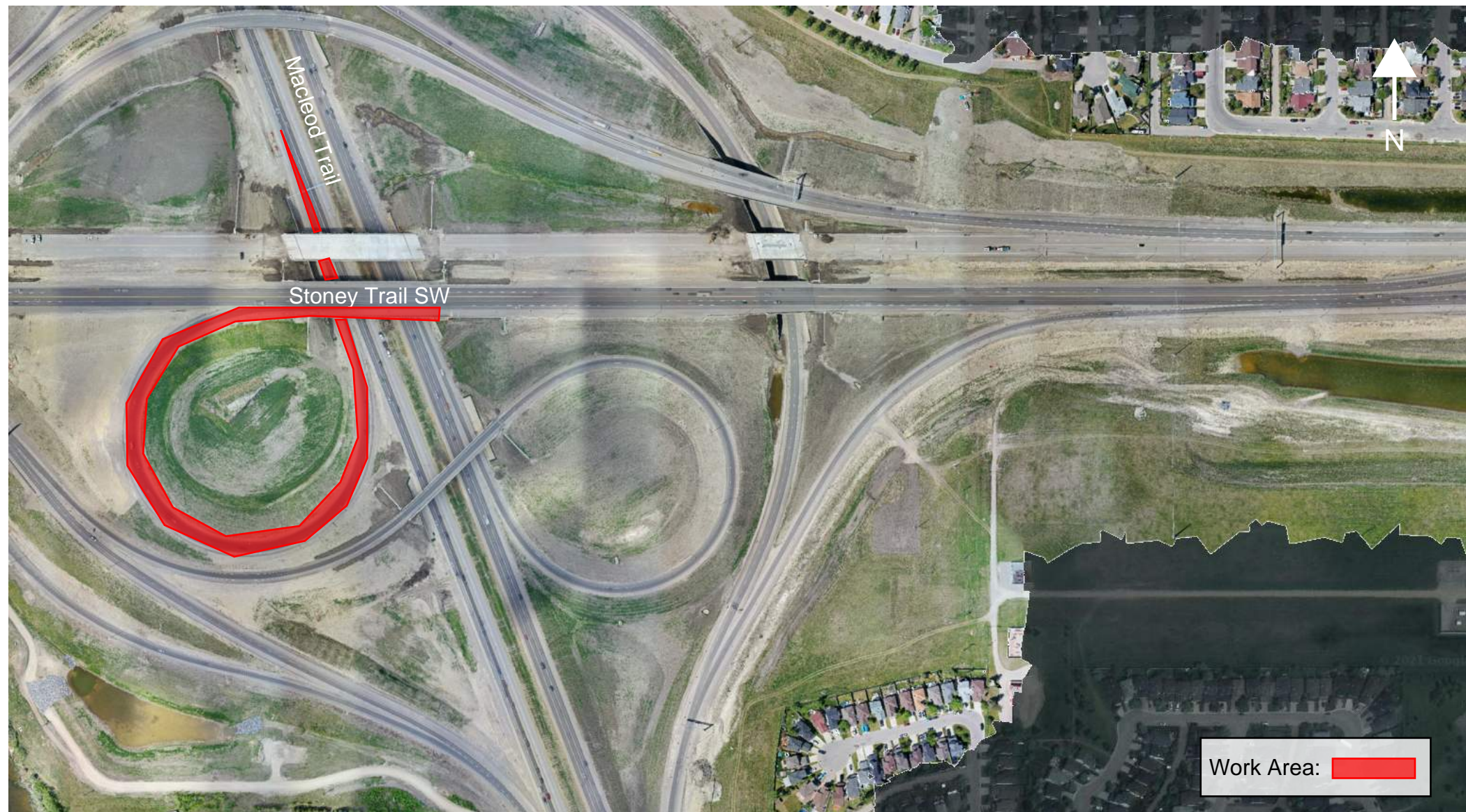
Southbound Macleod Trail SW
Right and Left Lane Closures - Paving Work
Thursday, August 19th - Sunday, August 22nd
6:00am - 7:00pm





To keep the exit ramp accessible to traffic at all times, this closure will have 2 phases. The closure will begin with phase 1 and workers will pave up to the end of the phase 1 closure (Marked by thick orange line). Once the workers reach this spot, the opening to the off-ramp will then be shifted back and traffic will be merged over the freshly paved lanes. From there, workers will continue paving until end of closure. This same technique will be applied to all on and off ramps for the length of the closure.

Southbound Macleod Trail to Eastbound Stoney Trail
Ramp Closure and Traffic Detour - Toplift Paving
Sunday, August 22nd 9:00am to 10:00pm



Southbound Macleod Trail to Eastbound Stoney Trail
Ramp Closure and Traffic Detour - Toplift Paving
Sunday, August 22nd 9:00am to 10:00pm

