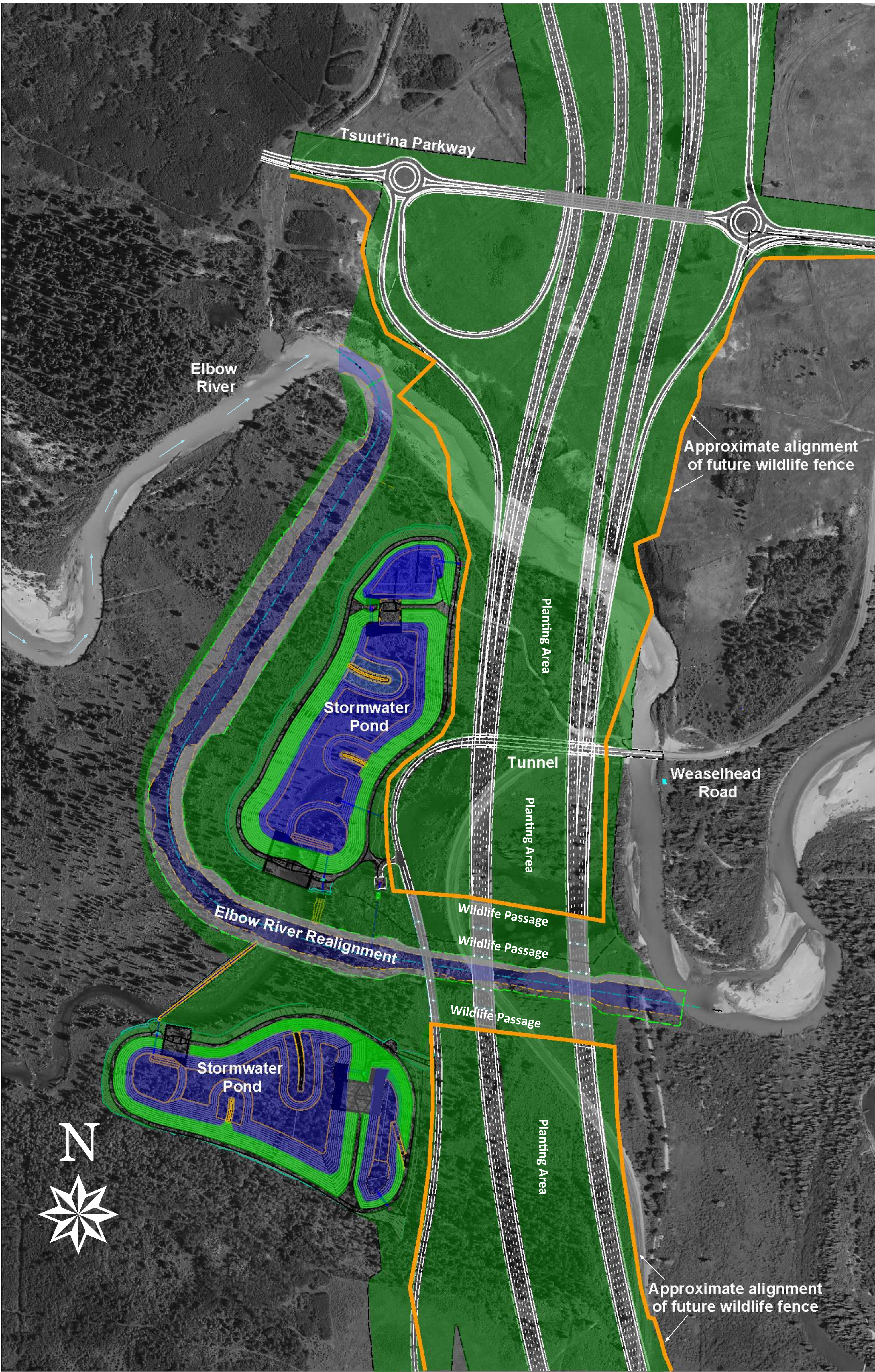


# Southwest Calgary Ring Road

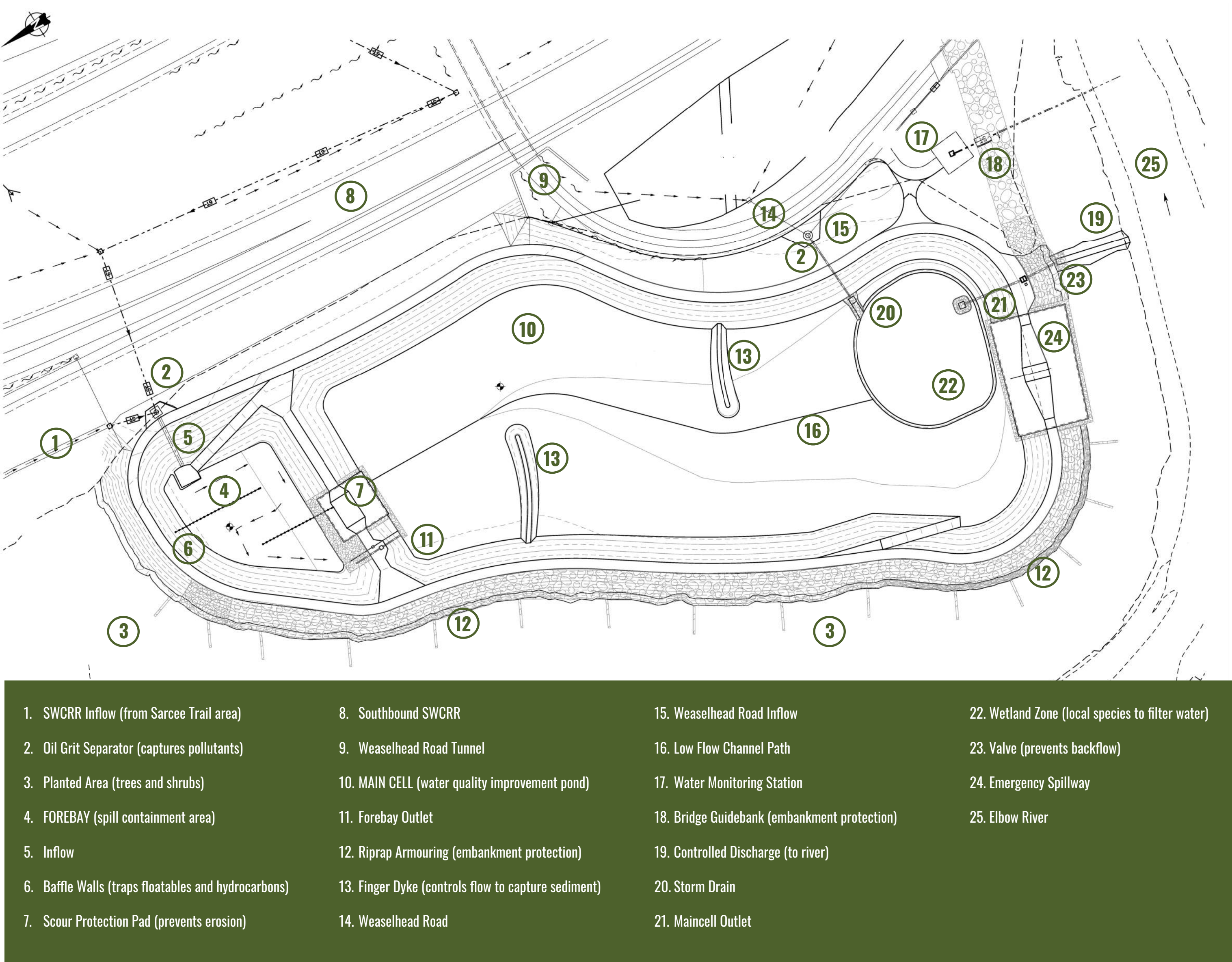
## North Stormwater Pond



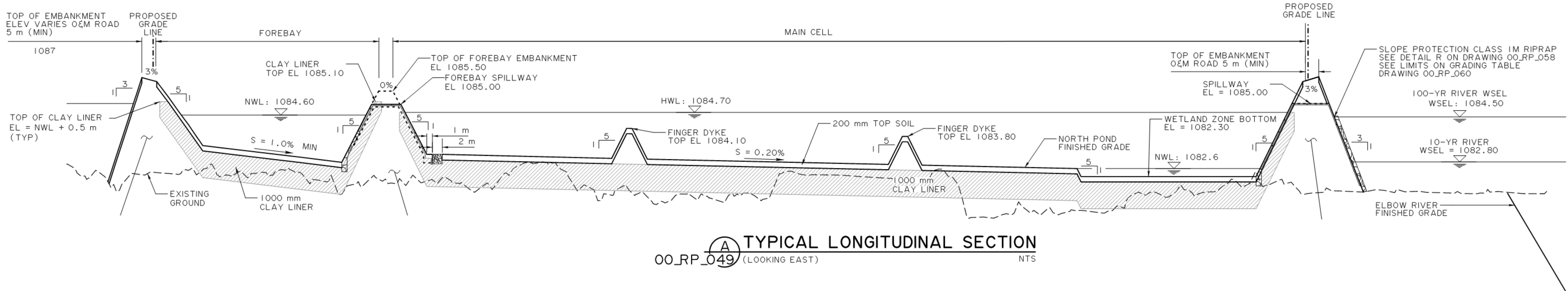
## Stormwater Ponds

- 21 stormwater ponds being constructed within the TUC to manage road runoff
- Mimic natural watershed process of collecting and filtering runoff
- Measures in place to improve water quality before it enters the Elbow River
- Provide almost twice as much storage capacity in the project footprint as the disturbed wetlands
- Planted with local vegetation wetland species to mimic natural habitats
- Two ponds near Elbow River equipped with remotely controlled gates operated by the City to contain spills

## North Elbow River Pond



1. SWCR Inflow (from Sarcee Trail area)	8. Southbound SWCR	15. Weaselhead Road Inflow	22. Wetland Zone (local species to filter water)
2. Oil Grit Separator (captures pollutants)	9. Weaselhead Road Tunnel	16. Low Flow Channel Path	23. Valve (prevents backflow)
3. Planted Area (trees and shrubs)	10. MAIN CELL (water quality improvement pond)	17. Water Monitoring Station	24. Emergency Spillway
4. FOREBAY (spill containment area)	11. Forebay Outlet	18. Bridge Guidebank (embankment protection)	25. Elbow River
5. Inflow	12. Riprap Armouring (embankment protection)	19. Controlled Discharge (to river)	
6. Baffle Walls (traps floatables and hydrocarbons)	13. Finger Dyke (controls flow to capture sediment)	20. Storm Drain	
7. Scour Protection Pad (prevents erosion)	14. Weaselhead Road	21. Maincell Outlet	



For discussion purposes only – subject to change

Questions? Contact us:

24/7 phone: 403-212-0565

info@SWCRRproject.com

SWCRRproject.com

